



# NEWSLETTER

Municipal Review Committee | 395 State Street | Ellsworth, ME 04605 | [www.MRCMaine.org](http://www.MRCMaine.org)

ISSUE 9.1 | July 2018

## Recycling: Local Decisions in the Global Marketplace

If you have followed the recent doom and gloom headlines, you may be feeling down in the dumps after reading about the amount of plastic in our oceans and the effect of Chinese restrictions on recyclables from the United States. There is an upheaval in our industry whether it is the commodity markets or the #banthestraw movement. Along with environmental challenges, municipal leaders must still make decisions related to MSW disposal while balancing costs, practicality, and how and what products are collected as recyclables, with ever-changing consumer behaviors.

There is bright news on the horizon. Many in the industry are watching Fiberight and its ability to adapt to changing market conditions. As Waste Dive recently reported, "By designing the plant to be adaptable based on future market trends, Fiberight has said it is better suited to keep up with market conditions than the average MRF. For example, the company's ability to create marketable pulp from mixed paper will be especially key at a time when the material is seen as nearly worthless in the Northeast."

By sorting, washing, and processing through anaerobic digestion MSW and recyclables will be turned into clean cellulose, biogas, and engineered fuel. This process also means plastics and metal are cleaner than the typical single stream recyclables making them more valuable. (Process Flow Diagram on page 4).

In the same Waste Dive article, Craig Stuart-Paul, CEO of Fiberight, said "I think we do open up an entirely new marketplace and new opportunities for recycling." Craig and others at Fiberight are under contract discussions as they pursue markets for these materials.

As Joining Member communities, we are at the forefront of answering the environmental and economic answers to the global recycling and MSW challenges. **And it's something we can be proud of!**

### UPCOMING MEETINGS

**July 24**

**Fiberight Member Tour**

**5:30 PM - 7:00 PM**

Coldbrook Road, Hampden

**Space is limited!**

RSVP to [swight@fiberight.com](mailto:swight@fiberight.com)

**July 25**

**Finance Committee Meeting: 9 AM**

**Regular Board Meeting: 10 AM**

Orono Municipal Building

59 Main Street, Orono

### ABOUT THE MRC

The Municipal Review Committee (MRC) is a non-profit association of Maine communities led by an elected, volunteer board of directors. 115 members have joined together to ensure the affordable, environmentally sound disposal of MSW in the long-term and will send their MSW to Fiberight's Coastal Resources of Maine facility in Hampden, Maine for processing.

Visit [www.mrcmaine.org](http://www.mrcmaine.org) or contact Greg Lounder at 207-664-1700 or [glounder@mrcmaine.org](mailto:glounder@mrcmaine.org) to learn more about the Municipal Review Committee and to add your name to our email contact list.

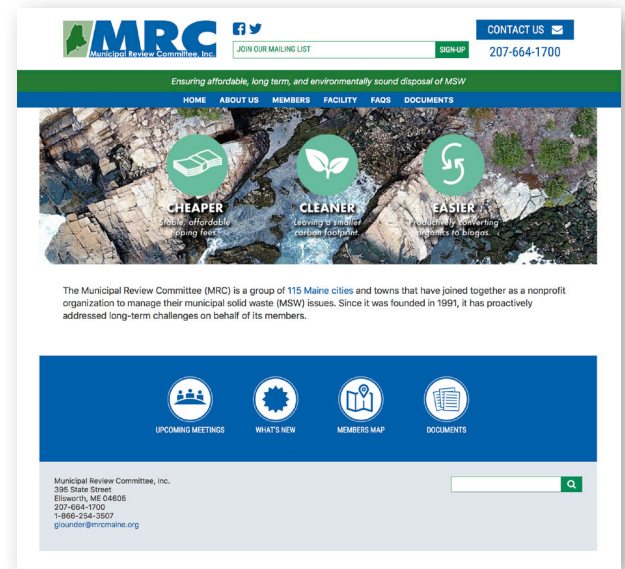
**ARE YOU ON SOCIAL MEDIA?**



MRC regularly sends updates and announcements by email to those who have signed up for our alerts. We also have active Facebook and Twitter accounts where we share articles and post about events and interact with members. **Make sure to "like" or follow us through your town's accounts too!**

# MRC Launches New Website

At the beginning of July, the MRC launched an exciting new website. The site's new design is easier to navigate, mobile-friendly, and includes updated information for Joining Members and interested visitors to review. Learn more about the MRC by exploring the searchable document library, reading the updated FAQs section, or reviewing the What's New page. The website includes a dedicated Facility Page with updated information on the Fiberight/Coastal facility. We hope you take the time to check out the new site.

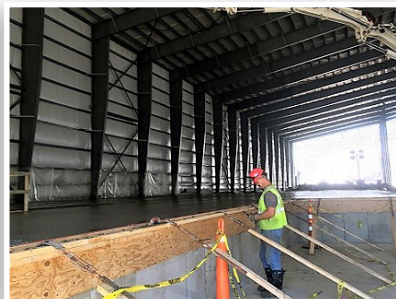


## Fiberight Corner

As summer quickly moves forward, so does progress at the Coastal facility in Hampden.

Concrete work is nearing completion in the east end of the facility and several vital pieces of equipment will be on site by month's end to begin the MRF installation process. Overhead electrical work has also begun and soon lighting fixtures will be installed.

The next monthly VIP Tour and Q & A at the Hampden site will take place on July 24th at 5:30pm. Due to safety concerns, tours are limited in number and all those interested in attending need to pre-register to reserve space. *Continued next page...*



Top left to right: Concrete placement; concrete placement; outside facility. Bottom left to right: Fiberight CEO speaks to attendees at June's VIP tour; washing tunnel (separates soluble organics from the biomass pulp and fines stream, as well as to screen and separate small plastic and other contaminants not screened by the drum pulper).

# Draft Recycling Agreement: Your Input Needed!

As a service to its members, MRC has undertaken development of the model recycling agreement to ensure pricing consistency with the project agreements and to facilitate parity and equity for all Joining Members. In contrast to MRC's role managing MSW under the Joinder Agreements, the MRC does not have a direct role as an advisor and advocate in the administration of the recycling services agreement. Ultimately, members interested in these services will contract for them directly with Coastal.

The draft model recycling services agreement for potential use by certain Joining Member communities that wish to enter into an agreement with Fiberight/Coastal for the processing of recyclables from a single stream recycling program that a town operates, sponsors, oversees, or otherwise makes available for the collection of qualified recyclable materials within its borders is available for review on our website. We invite your comments and feedback on this draft document in advance of the July 25 Board Meeting where the MRC Board will consider its endorsement of the model agreement.

For Joining Members only, the cost of this processing service can be no greater than 50% of the effective tipping fee for MSW disposal. We expect this will be an attractive option for some Joining Member communities. Fiberight/Coastal would be entitled to receive all value and proceeds associated with the sale of recyclable materials.

As always, we are available to answer any questions you may have. In the meantime, we look forward to receiving your feedback on the draft document in advance of the July 25, 2016 MRC Board of Directors meeting. Please provide comments to Greg Louder via US Mail at 395 State Street, Ellsworth, Maine 04605; via email at [glounder@mrcmaine.org](mailto:glounder@mrcmaine.org), or via phone at 664-1700.

## Final Payout

**Departing Members will receive their final payout once the audit is complete. MRC will mail checks to Departing Members approximately two weeks following the Board's acceptance of the audit results, which is expected by the end of August.**

### *Fiberight Corner...continued*

Single-Sort Recycling contracts are being finalized and should be available to MRC member communities for consideration in mid-August.

Fiberight continues to work with Apparel Impact to place collection bins for clothing and other textiles in MRC communities.

For more information about any of the above please contact [swright@fiberight.com](mailto:swright@fiberight.com) or call Shelby at 592-6432. **Follow Fiberight on Facebook!**

## Interim Delivery Update

Although the MRC notified members of an interim delivery option to process MSW at PERC, it has come to our attention that PERC will not honor the Waste Disposal Agreement signed in January so all Joining Members are sending their MSW to either Juniper Ridge Landfill or Crossroads Landfill during this transition time. If you have any questions, please contact Greg Louder at [glounder@mrcmaine.org](mailto:glounder@mrcmaine.org) or 664-1700.

# Who is Coastal Resources of Maine?

You've probably seen the name Coastal Resources of Maine (CRM) or Coastal used recently. Coastal is the project company formed by Fiberight to finance, own, and operate the Hampden project. In these types of projects, it is typical to form a special single-purpose entity to facilitate financing. Thus, as the project was developed, Fiberight formed Coastal as a limited liability company (LLC), for the single purpose of owning the Hampden project.

At first, Fiberight owned all of Coastal. Coastal was added as a party to the Site Lease and Master Waste Supply Agreement by agreement with the MRC which had foreseen all of these arrangements and accounted for them in the agreements. The MRC required Fiberight to stay in the project as a party to these agreements as well. Then, to raise equity capital for the Hampden project, Fiberight sold off shares in Coastal to an equity investor, Ultra Capital, with the proceeds of the sale being invested in the project.

