

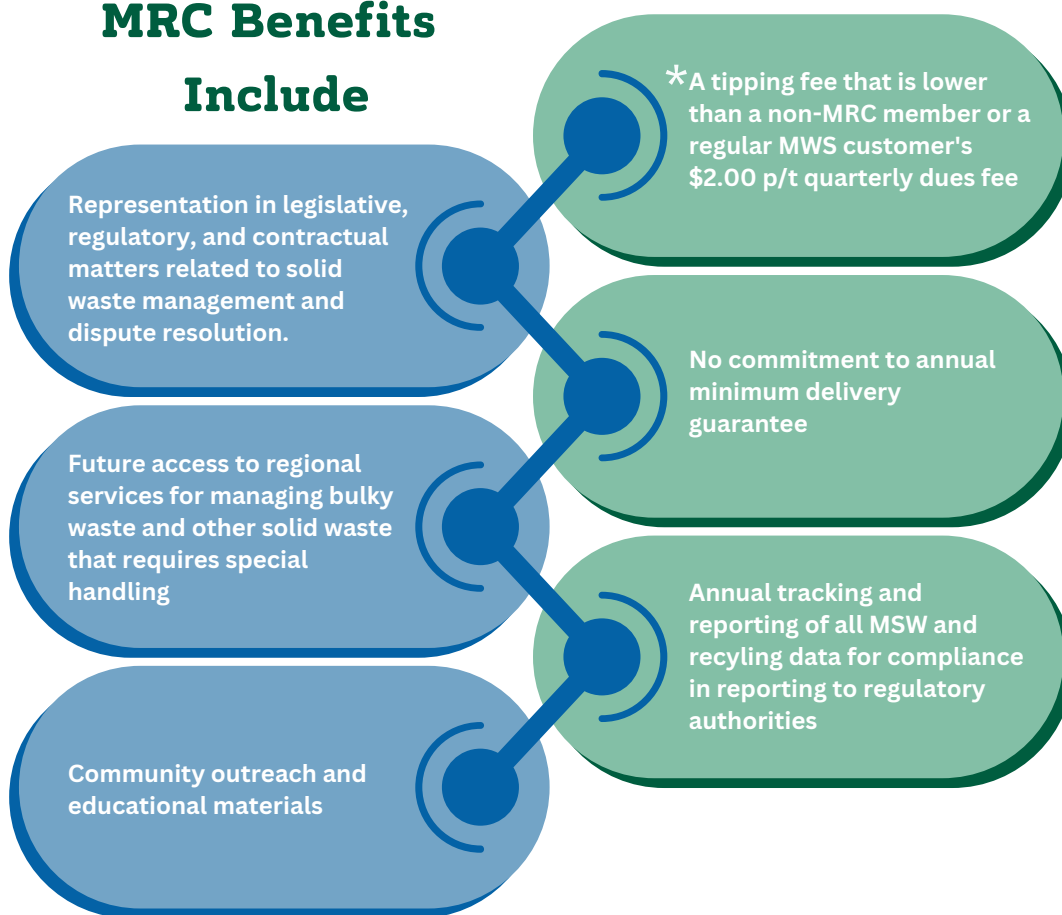


# JOIN THE MRC

**NOW is the time to join the MRC and RECYCLE and PROCESS your MSW with Municipal Waste Solutions in Hampden, Maine. The commitment to a 10 year+ contract comes with a MRC associate membership.**

## MRC Benefits

### Include



Innovative Resource Recovery is leading the way in developing technologies that recover valuable resources from waste streams. The public-private partnership with MRC at the MWS facility will serve as a blueprint for how communities can maximize landfill diversion and minimize environmental impact. Engineering at MWS will continue throughout 2023, with construction commencing in early 2024. The existing infrastructure and equipment to process mixed waste will be utilized and expanded upon to support the production of renewable natural gas and other products. When operational at full permitted capacity, the plant has the ability to process 180,000 tons/year of mixed waste, diverting over 50% of that material from landfill.

Contact MRC Executive Director, Michael Carroll [mc Carroll@mrcmaine.org](mailto:mc Carroll@mrcmaine.org)

\*Annual CPI Adjustment in December

20 Godfrey Dr., Ste 300 | Orono, ME 04473 | 207-664-1700 | [www.mrcmaine.org](http://www.mrcmaine.org)

